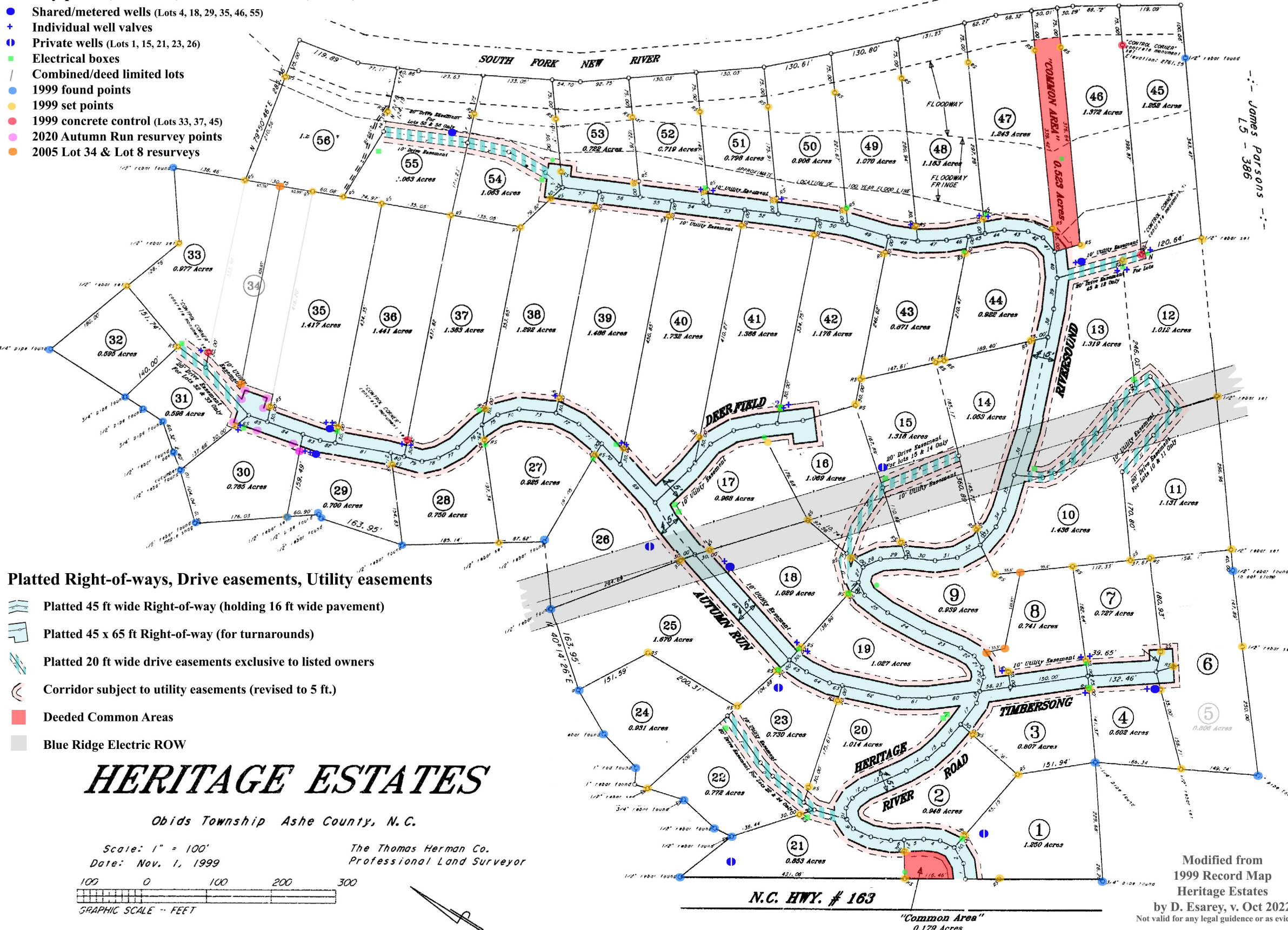


Survey points, lot lines, lot combinations, wells, & utilities

- Shared/metered wells (Lots 4, 18, 29, 35, 46, 55)
- + Individual well valves
- Private wells (Lots 1, 15, 21, 23, 26)
- Electrical boxes
- Combined/deed limited lots
- 1999 found points
- 1999 set points
- 1999 concrete control (Lots 33, 37, 45)
- 2020 Autumn Run resurvey points
- 2005 Lot 34 & Lot 8 resurveys



Platted Right-of-ways, Drive easements, Utility easements

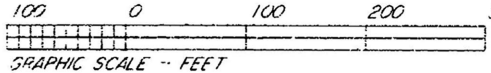
- Platted 45 ft wide Right-of-way (holding 16 ft wide pavement)
- Platted 45 x 65 ft Right-of-way (for turnarounds)
- Platted 20 ft wide drive easements exclusive to listed owners
- Corridor subject to utility easements (revised to 5 ft.)
- Deeded Common Areas
- Blue Ridge Electric ROW

HERITAGE ESTATES

Obids Township Ashe County, N.C.

Scale: 1" = 100'
Date: Nov. 1, 1999

The Thomas Herman Co.
Professional Land Surveyor



Modified from
1999 Record Map
Heritage Estates
by D. Esarey, v. Oct 2022
Not valid for any legal guidance or as evidence.